

Baldwin Building Apartment 333



Bright Spacious Living Room with built-ins and beautiful balcony



Galley kitchen leading to dining area

Thank you for your interest in Beaumont. This corner Birch apartment is located on the third floor of the Baldwin Building and has eastern and southern exposures. The monthly fee for this apartment is \$7,262 (single occupancy) and \$9,311 (double occupancy). There is also a \$350 per month capital assessment fee.

Please contact Audrey Walsh, Director of Marketing, to schedule a time to view this unit at (610) 526-7004.

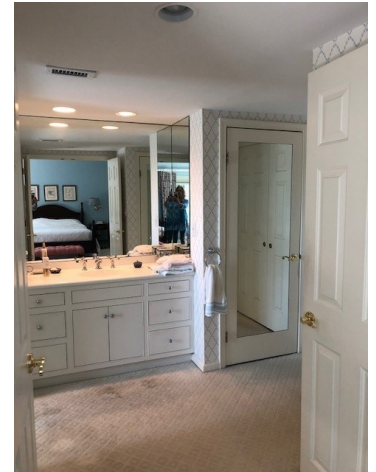
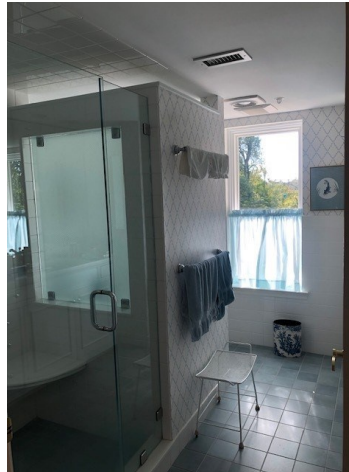
** Plus a one time Special Assessment of \$96,038.00 for our campus-wide enhancement project. Call for details!*

\$1,300,000.00

**TWO
BEDROOM
WITH LIBRARY,
TWO BATH
PLUS POWDER
ROOM
BIRCH
APARTMENT**

2,346 SF

Baldwin Building Apartment 333



Large Master Suite with master bath, dressing area, and multiple closets



Library



Guest Suite (currently used as an office) and full bath